



TREIO EEDES SIMULATOR WORKSHOP

5-6 OCTOBER 2023

Y. Salmatzidis, G. Pangalos

Aristotle University of Thessaloniki, Greece

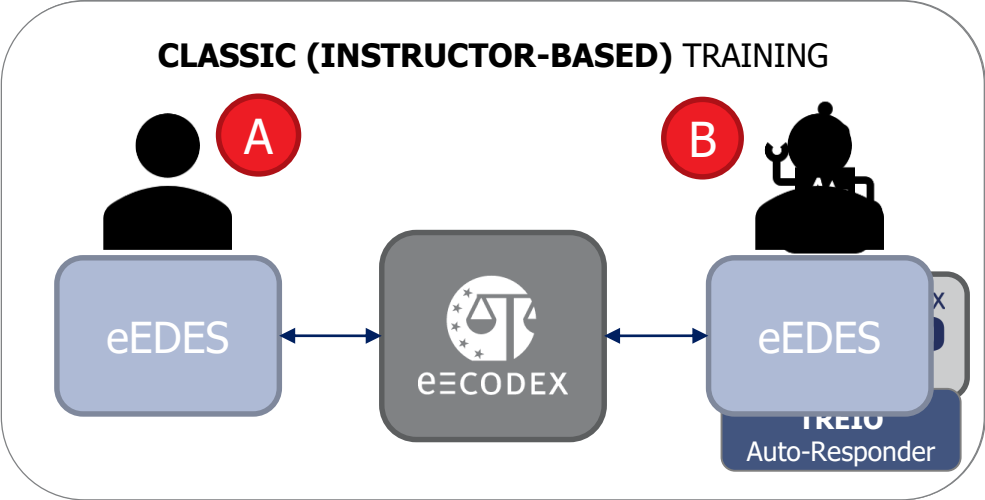


This project was funded by the European Union's Justice Programme (2014-2020) under Grant Agreement No. 882068

INTRODUCTION

- We will look at the TREIO eEDES Simulator
- We need your feedback to evaluate the use of the tool during EIO training sessions
- This task is important for us to identify the benefits, drawbacks, improvements and challenges for the Simulator
- We identify different groups based on previous experience and roles
- With the use of Mentimeter, the outcome will be a review of the TREIO eEDES Simulator Tool

AIMING FOR A REAL-TIME TRAINING EXPERIENCE

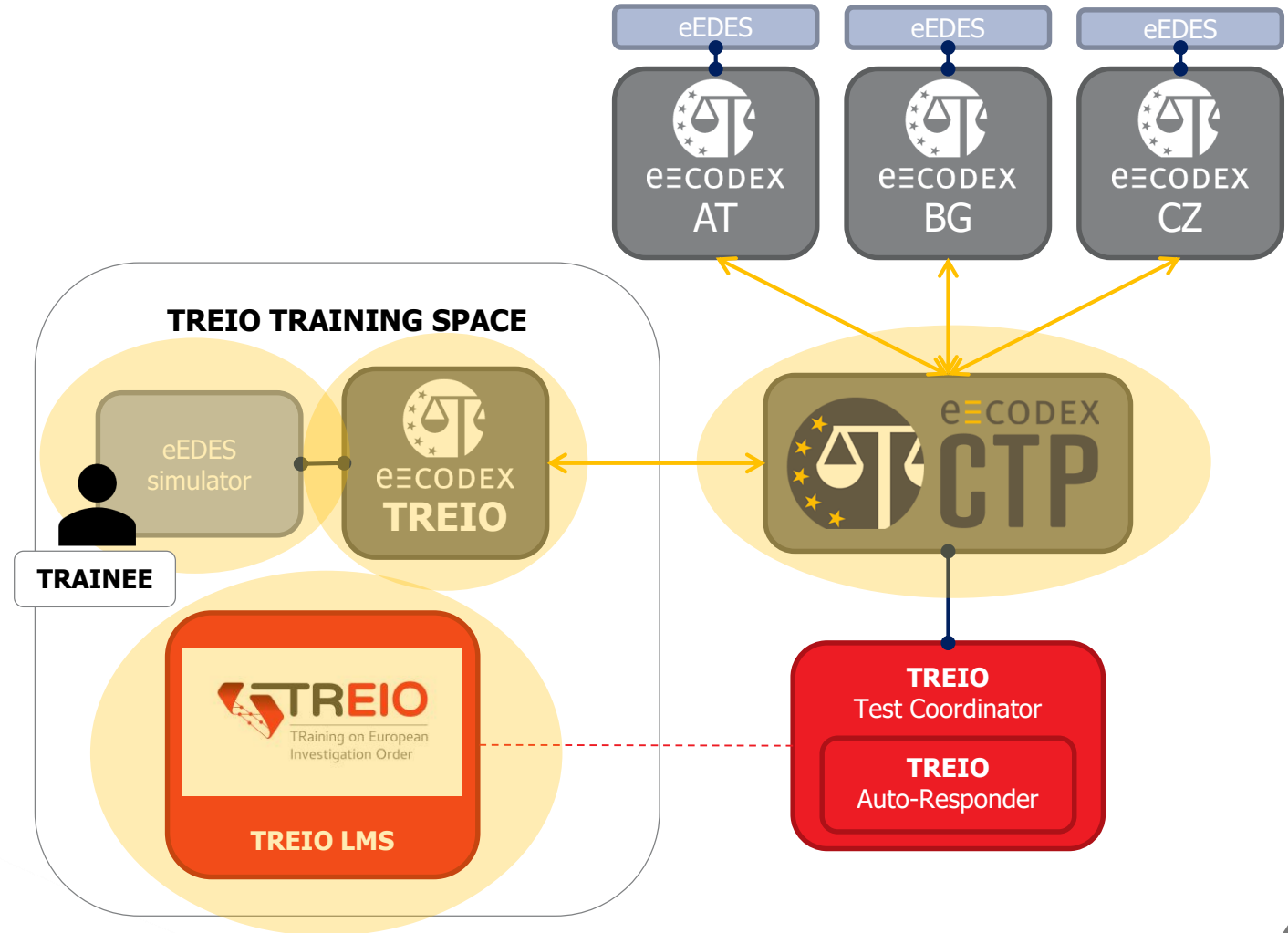


A & B are placed by the TREIO Auto-Responder
 Suitable for flipped classroom training

TREIO ENVIRONMENT

Set-up

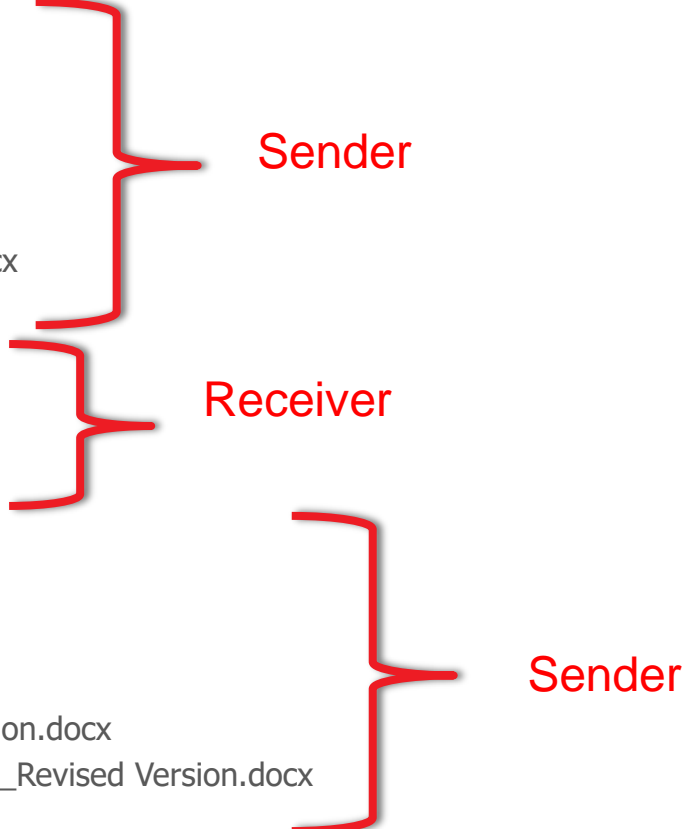
- A full e-CODEX gateway is setup for TREIO
- The eEDES Simulator (local installation) sends messages through this gateway and is available for training – **no national implementation required**
- This eEDES Simulator is able to communicate with another e-CODEX gateway (the e-CODEX CTP) for real-time training
- Test coordination via the TREIO LMS + the TREIO Auto responder



CURRENT TECHNICAL SET-UP

- Local installation of TREIO training environment on AUTH premises
 - **eEDES simulator (XX):** e-CODEX Gateway, Connector, custom CCDB and local installation and configuration of eEDES are complete
 - The current stable version of eEDES Simulator is based on e-Evidence v2.2.2, identical to the latest available version of RI v2.2.2
 - **TREIO auto-responder (ZZ):** module is able to read and respond to e-CODEX XML messages, as well as send EIO cases.
 - The plan is to continuously update with new content/test EIO cases
 - eEDES Simulator, TREIO auto-responder and Moodle LMS authentication linked
 - 1 common account (username/password) for ALL interfaces

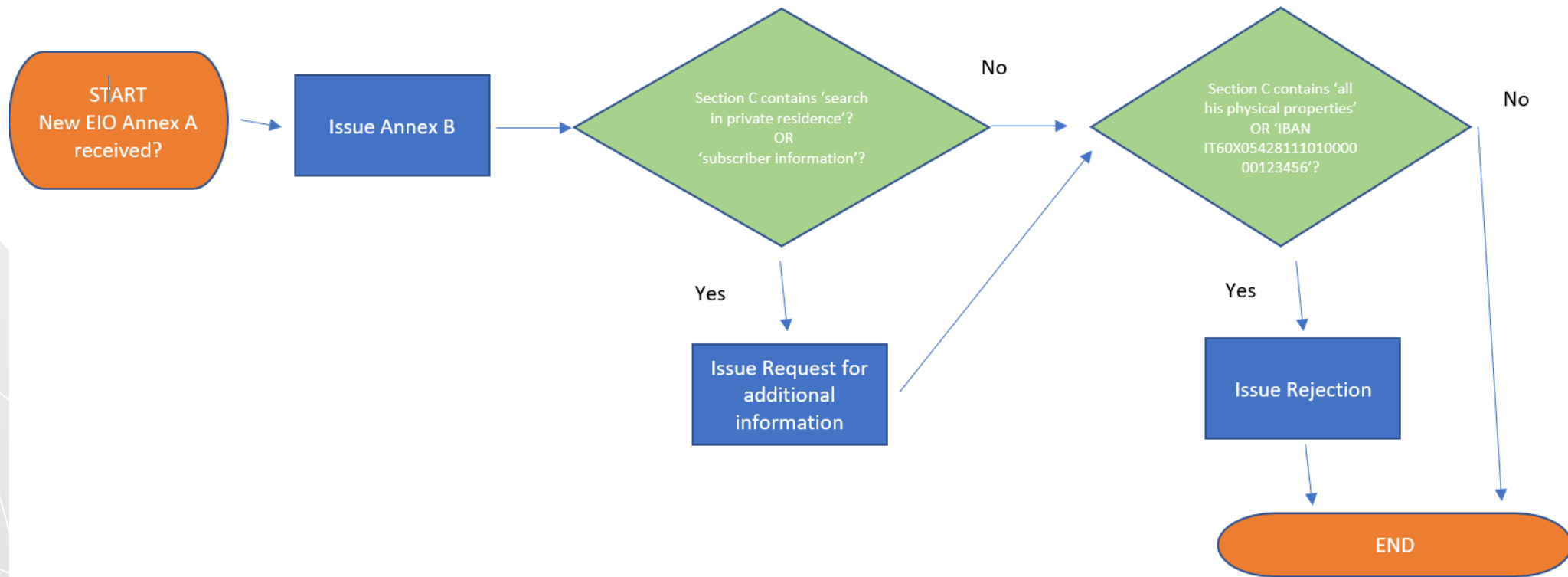
SUPPORTED USE CASE TRAINING SCENARIOS

1. TREIO_Exercise01_FillingEIO_Instructions_EN_Revised Version.docx
 2. TREIO_Exercise02_ReviewingEIO_Instructions_EN_Revised Version.docx
 3. TREIO_Exercise03_AmendingEIO_Instructions_EN_Revised Version.docx
 4. TREIO_Exercise04_Signing and sending EIO_Instructions_EN_Revised Version.docx
 5. TREIO_Exercise05_Checking whether Annex B has been received_EN_Revised Version.docx
 6. TREIO_Exercise06_Checking whether Additional Information is being requested_EN_Revised Version.docx
 7. TREIO_Exercise07_Checking whether EIO is Rejected_with instructions_EN_Revised Version.docx
 8. TREIO_Exercise08_Issuing an Annex B_EN_Revised Version.docx
 9. TREIO_Exercise09_Request for additional information_EN_Revised Version.docx
 10. TREIO_Exercise10_Rejecting an EIO_EN_Revised Version.docx
 11. TREIO_Exercise01_Filling in EIO without instructions_EN_Revised Version.docx
 12. TREIO_Exercise02_Reviewing an EIO_without Instructions_EN_Revised Version.docx
 13. TREIO_Exercise03_AmendingEIO_without Instructions_EN_Revised Version.docx
 14. TREIO_Exercise04_Signing and sending EIO_without instructions_EN_Revised Version.docx
 15. TREIO_Exercise05_Checking whether Annex B has been received_without instructions_EN_Revised Version.docx
 16. TREIO_Exercise06_Checking whether Additional Information is being requested_without instructions_EN_Revised Version.docx
 17. TREIO_Exercise07_Checking whether EIO is Rejected_without instructions_EN_Revised Version.docx
- 
- Sender
- Receiver
- Sender

TREIO AUTORESPONDER IF-THEN BEHAVIOUR (1)

Annex A from Issuing State	1 st Response from the Executing State (TREIO Autoresponder)	2 nd Response from the Executing State (TREIO Autoresponder)
IF Annex A is issued	THEN issue Annex B	
IF Annex A/Section C contains exact text (case sensitive) 'search in private residence'	THEN issue Annex B	AND issue request for Additional Information
IF Annex A/Section C contains exact text (case sensitive) 'all his physical properties'	THEN reject EIO but only after having issued Annex B and additional information (if applies)	
IF Annex A/Section C contains exact text (case sensitive) 'subscriber information'	THEN issue Annex B	AND issue request for Additional Information
IF Annex A/Section C contains exact text (case sensitive) 'IBAN IT60X0542811101000000123456'	THEN reject EIO but only after having issued Annex B and additional information (if applies)	

TREIO AUTORESPONDER IF-THEN BEHAVIOUR (2)

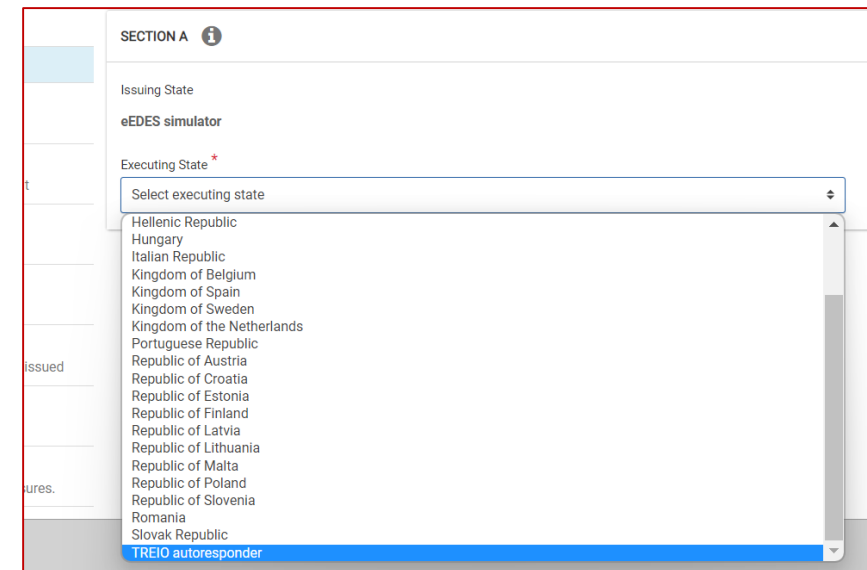
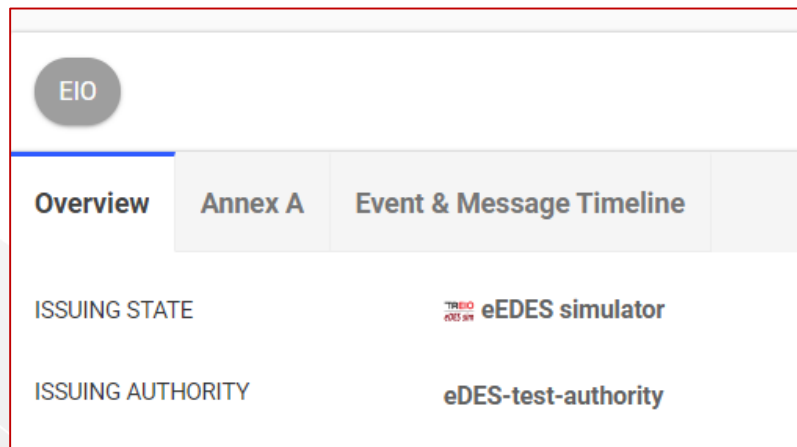


HANDS-ON TRAINING ON EIO USING THE eEDES SIMULATOR

USE CASE 1: OUTGOING EIO

Users interact with the eEDES assuming the role of the *Issuing State*, in our case the “eEDES Simulator” (the “XX” state).

The role of the *Executing State* is taken by the “TREIO Auto-Responder” (the “ZZ” State) which responds to incoming requests.

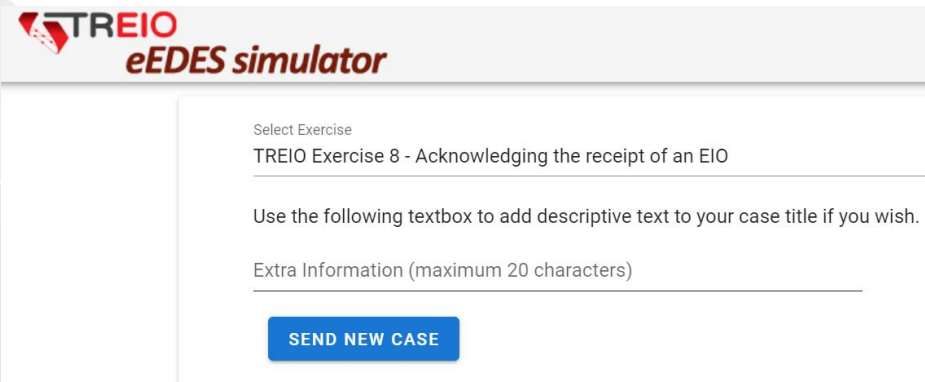


HANDS-ON TRAINING ON EIO USING THE eEDES SIMULATOR

USE CASE 2: INCOMING EIO

Students interact with eEDES assuming the role of the *Executing State* (on the eEDES Simulator).

Different flavors of incoming Annex A cases can be “ordered” through the TREIO Auto-Responder’s environment (the *Issuing State*) to the Executing State, at the request of the student.



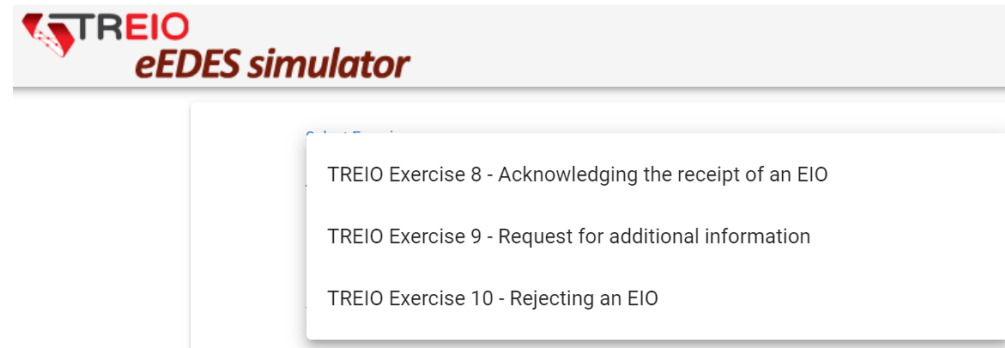
TREIO
eEDES simulator

Select Exercise
TREIO Exercise 8 - Acknowledging the receipt of an EIO

Use the following textbox to add descriptive text to your case title if you wish.

Extra Information (maximum 20 characters)

SEND NEW CASE



TREIO
eEDES simulator

- TREIO Exercise 8 - Acknowledging the receipt of an EIO
- TREIO Exercise 9 - Request for additional information
- TREIO Exercise 10 - Rejecting an EIO

DEMO OF USE CASES 1 & 2

My Dashboard

Last edited cases

Issued requests	Received requests	Drafts
2	5	1

28/03/2023	EIO-XX-ZZ-2023-03-28-0001-1	test case 2	ZZ	EIO
24/03/2023	EIO-XX-ZZ-2023-03-24-0001-1	First case	ZZ	EIO

SECTION A

Issuing State
eEDES simulator

Executing State *

Select executing state

- Hellenic Republic
- Hungary
- Italian Republic
- Kingdom of Belgium
- Kingdom of Spain
- Kingdom of Sweden
- Kingdom of the Netherlands
- Portuguese Republic
- Republic of Austria
- Republic of Croatia
- Republic of Estonia
- Republic of Finland
- Republic of Latvia
- Republic of Lithuania
- Republic of Malta
- Republic of Poland
- Republic of Slovenia
- Romania
- Slovak Republic
- TREIO autoresponder

EIO

Overview | Annex A | Event & Message Timeline

ISSUING STATE eEDES simulator

ISSUING AUTHORITY eDES-test-authority

TREIO EEDES SIMULATOR VALIDATION SURVEY

Go to www.menti.com
Enter the code
2708 9772